



*“News from the Heartland”*  
**Mid West Society of Quality Assurance Newsletter**  
February/March 2008



**MWSQA Officers**

**President:** [president@mwsqa.org](mailto:president@mwsqa.org)

Barbara Stephenson; Pfizer Animal Health, phone 269/833-2856

**Vice President:** [vicepresident@mwsqa.org](mailto:vicepresident@mwsqa.org)

Tim Valley, Covance Laboratories Inc, phone 608/242-2712 ext. 2040

**Secretary** [secretary@mwsqa.org](mailto:secretary@mwsqa.org)

Jonathan Kreuger, Covance Laboratories Inc, phone 608/242-2712, ext. 2503

**Treasurer:** [treasurer@mwsqa.org](mailto:treasurer@mwsqa.org)

Wendi Godwin, MPI Research, phone 269/668-3336 ext. 3156

**Nominations Director:** [nomination@mwsqa.org](mailto:nomination@mwsqa.org)

Andrea Steed, Eli Lilly & Company, phone 317/ 655-9131

**Membership Director:** [membership@mwsqa.org](mailto:membership@mwsqa.org)

Matt Foster, MPI Research, phone 269/668-3336 ext. 1247

**Audit Director:** [audit@mwsqa.org](mailto:audit@mwsqa.org)

Janet Cunningham, Eli Lilly & Company, phone 317-433-4055

**Communications Director:** [communication@mwsqa.org](mailto:communication@mwsqa.org)

Jennifer Beech, Ricerca Biosciences, LLC, phone 440-357-3726

**Past President:** [pastpresident@mwsqa.org](mailto:pastpresident@mwsqa.org)

Brian Mitchell; Eli Lilly & Company, phone 317/ 655-9258

**Historical Chair:** [historical@mwsqa.org](mailto:historical@mwsqa.org)

Steve Drzick, MPI Research, phone 269/668-3336 ext. 1409

**Survey Co-Chair:** [survey@mwsqa.org](mailto:survey@mwsqa.org)

Andrea K Steed, Eli Lilly and Company, phone 317/655-9131

**Editor:** [editor@mwsqa.org](mailto:editor@mwsqa.org)

Paula Wehmeyer, Bioanalytical Systems, Inc. (BASi), phone 765/497-5866

Please submit articles for the next newsletter by **May 20, 2008** to [editor@mwsqa.org](mailto:editor@mwsqa.org)



## ***Presidential Ponderings***

Barbara Stephenson, Pfizer, Inc.  
President, MWSQA

The MWSQA Chapter ended 2007 in excellent financial condition with money in the bank and 340 members. I am delighted and privileged to be President of the MWSQA this year and look forward to another successful year for the Chapter.

The MWSQA chapter is again offering a scholarship to a MWSQA member in good standing. The scholarship application period closed 22 February and our winner will be announced in March. The lucky MWSQA member will receive up to \$2000.00 which must be applied to his/her costs of attending the SQA annual meeting in April. Just another advantage to MWSQA membership! If you did not take the opportunity of applying this year, be sure to look for scholarship opportunities next January.

Thanks to our active membership and our nomination director, Andrea Steed, we had a successful election in December and now have two new directors, a new treasurer and vice president.

The BoD would like to thank our out-going board members for all their contributions in keeping our chapter going. Krista Richardson, Charles River Laboratories Preclinical Services, leaves the board after dedicating two years as our Treasurer. Celeste Rose, RoseTECH Consulting, was our Communications Director and Steve Dzrick, MPI Research, was our Membership Director. Both Celeste and Steve completed two years of hard work as your board members. The Board wants to give special thanks to Lea Gough, Covance Laboratories Inc, our out-going Past President. Lea has dedicated many years on the MWSQA BoD and has decided to "retire" from the board. Her past positions of responsibility included Secretary, Vice President/Planning Committee Chair, President, Past President and numerous years as a member of the Planning Committee. Thanks Krista, Celeste, Steve and Lea for your contributions and dedication to MWSQA.

I am pleased to welcome our new board members:

- Vice President/Planning Committee Chair - Tim Valley, Covance Laboratories Inc.
- Treasurer - Wendi Godwin, MPI Research
- Communications Director – Jennifer Beech, Ricerca Biosciences, LLC
- Membership Director – Matt Foster, MPI Research

Brian Mitchell, Eli Lilly and Company, will continue on the board. He is stepping down from the President's position to the position of Past President. Your remaining BoD consists of:

- Secretary - Jon Kreuger, Covance Laboratories Inc.
- Audit Director - Janet Cunningham, Eli Lilly and Company
- Nomination Director – Andrea Steed, Eli Lilly and Company

We are fortunate to have the following additional volunteers working for MWSQA.

- Paula Wehmeyer, Bioanalytical Systems, Inc. (BASi), is continuing as our newsletter editor.
- Celeste Rose will be our website liaison.
- Steve Dzrick will be our historian.



## **Save the Date for 2008 Summer Meeting 29-30 July in Madison, Wisconsin**

Tim Valley, Covance Laboratories Inc.  
Vice President & Planning Committee Chair, MWSQA

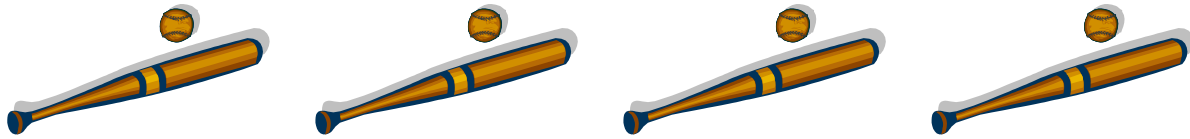
As I sit writing this article for the MWSQA and SQA newsletters, the weather in Madison, Wisconsin is quite severe. Temperatures range between 8 and 10 degrees below zero, and wind chills in the range of 25-35 below zero. It is so cold water mains in neighborhoods have burst, flooding already snow packed streets and making any sort of travel treacherous. This doesn't sound inviting, but come late July, Madison will be one of the most beautiful cities in the country, and also happens to be the location for the summer meeting of the Midwest Society of Quality Assurance.

The specific dates for the meeting are July 29-30, 2008. The meeting will take place at the Fluno Center and is graciously being sponsored by Covance Laboratories Inc. The Fluno Center combines state-of-the-art technology with the ambience of a comfortable, relaxed residential setting. The center includes an auditorium, classrooms, meeting and conference space, overnight guest rooms, dining, fitness room and study pub. The interior features original lithographs of designs by Frank Lloyd Wright.

The meeting format will be similar to recent meetings. There will be pre-conference training provided on the 29<sup>th</sup> and the second day will include presentations discussing computer validation, risk assessment, QA soft skills, regulatory updates and more. The planning committee is busy arranging these topics.

The evening networking activity will include attending a Madison Mallards baseball game. The Madison Mallards are a north league baseball team who play home games at Warner Park. MWSQA worked out an agreement with the Mallards organization which will include a game ticket, all the food, beer and soda, and free bus ride to and from the Fluno Center. It should be a good time for everyone!!!

Summer may seem very far away, but is actually just around the corner. This summers' MWSQA meeting should be fun and I hope to see you all there. No winter clothes will be required!



## **MWSQA Welcomes New Officers**

***And a HUGE “Thank You”  
to the outgoing officers!***

Andrea K Steed, Eli Lilly and Company  
Nominations Director, MWSQA

MWSQA would like to welcome and congratulate the new Board of Directors members:

Tim Valley (Covance Laboratories Inc.)

Vice President/Planning  
Committee Chair

Matt Foster (MPI Research)

Director – Membership

Jennifer Beech (Ricerca Biosciences, LLC)

Director – Communications

Wendi Godwin (MPI Research)

Treasurer

The new Board of Directors is:

Brian Mitchell - Past President

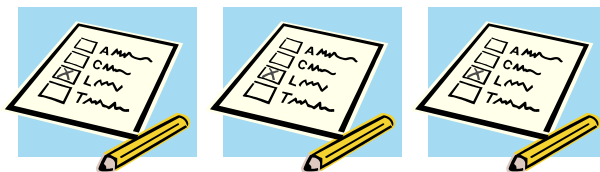
Barb Stephenson – President

Tim Valley – Vice President/Program Planning Chair

Jon Kreuger - Secretary (2007 - 2008)

Wendi Godwin - Treasurer (2008 - 2009)  
Jennifer Beech - Communications Director (2008 - 2009)  
Matt Foster - Membership Director (2008 - 2009)  
Andrea Steed – Nominations Director (2007 - 2008)  
Janet Cunningham – Auditing Director (2007 - 2008)

I also would like to take this opportunity to thank our officers and their organizations that left the Board of Directors at the end of 2007 for their past service to MWSQA. They are: Past President – Lea Gough (Covance Laboratories Inc), Directors – Steve Drzick (MPI Research) and Celeste Rose (RoseTECH Consulting), and Treasurer – Krista Richardson (Charles River Laboratories). You will be missed!



### **Note from your Editor**

Greetings All,

Here's hoping that the groundhog is wrong and spring is not so far away... meanwhile let's stay safe and warm. While we're indoors enjoying a hot beverage we could be contemplating the content of an article for this -*your* newsletter. The content is as good as we make it. At any level of experience everyone has something valuable to say. Please write an article, light or serious and send it in. You know it will look good on your resume.



With heartfelt pleas,  
Paula

Paula N. Wehmeyer, Bioanalytical Systems, Inc. (BASi)  
Editor, *News from the Heartland*, MWSQA newsletter

**Thank You to All Who Contribute to Our Newsletter!!!**

*Opinions are those of the authors and not necessarily those of MWSQA.  
The editor, MWSQA and national SQA are not responsible for any damage.*